



36 (Stock) Sport | 2024

Barcelona

2 Cabins | 2 Full Heads

2 x 300 HP Mercury Verado

Hydro Glide Foil System
Raymarine nav system
Premium sound system
Joystick piloting control

pvp **731.000 €**

Oferta **640.000 €**

Taxes included
Impuestos incluidos



Image for reference only

| TECHNICAL SPECIFICATIONS |

LOA: 10.96 M | 36'0" ft

BEAM: 4.45 M | 14'7" ft

DRAFT: 60 CM | 2'0" ft

| BASIC EQUIPMENT |

- 2 x cabins
- 2 x electric toilets and showers
- 6 x sleeps (2 in salon)

| PROPULSION |

- 2 x white Mercury Verado V8 300 HP
- Engine hours: 5
- Joystick piloting control (includes autopilot, electric steering and skyhook) and 4" vessel view display with active trim

| ESPECIFICACIONES TÉCNICAS |

ESLORA: 10.96 M | 36'0" pies

MANGA: 4.45 M | 14'7" pies

CALADO: 60 CM | 2'0" pies

| EQUIPAMIENTO BÁSICO |

- 2 x cabinas
- 2 x baños y duchas eléctricos
- 6 x plazas (2 en el salón)

| PROPULSIÓN |

- 2 x Mercury Verado blancos V8 300 HP
- Horas de motor: 5
- Joystick de pilotaje (incluye piloto automático, dirección eléctrica y gancho aéreo) y pantalla de visualización de la embarcación de 4" con trimado activo

| EQUIPMENT |

- Windlass 1000W with handheld control
- Rope(200FT)
- Chain(15FT) and stainless steel 35LBS anchor with bridle
- Aquila Hydro Glide semi foiling system to improve comfort and consumption
- Axiom 12 + de Raymarine
- VHF
- AIS (Em-track)
- Autopilot

| EQUIPAMIENTO |

- Molinete 1000W con mando manual
- Cuerda (200 pies)
- Cadena (15 pies) y ancla de acero inoxidable de 35 libras con brida
- Sistema semi foiling Aquila Hydro Glide para mejorar el confort y el consumo
- Axiom 12 + de Raymarine
- VHF
- AIS (Em-track)
- Autopilot

| EQUIPMENT |

- Fan in each cabin
- Bow seating canvas cover - black
- Electric two burner induction cooktop installed at galley
- Premium sound system - 6 x 230w LED 6.5" speakers, 2 x 1400W AMP, 1 x wireless remote, 1 x LED 10" subwoofer in lieu of standard 6 x 200W 6" speakers
- retractable stainless steel swim ladder
- Fresh water deck wash-down at bow (installed in anchor locker)
- Synthetic teak

| EQUIPAMIENTO |

- Ventilador en cada cabina
- Funda de lona para asiento de proa - negro
- Placa de inducción eléctrica de dos quemadores instalada en la cocina
- Sistema de sonido premium: 6 altavoces LED de 6,5" de 230 W, 2 AMP de 1400 W, 1 control remoto inalámbrico, 1 subwoofer LED de 10" en lugar de 6 altavoces estándar de 6" de 200 W
- Escalera de baño retráctil de acero inoxidable
- Lavado de cubierta con agua dulce en proa (instalado en armario de ancla)
- Teca sintética



Image for reference only



Image for reference only



Image for reference only



Image for reference only



Image for reference only



Image for reference only



Image for reference only



Image for reference only



Image for reference only







AQUILA

PONZU



















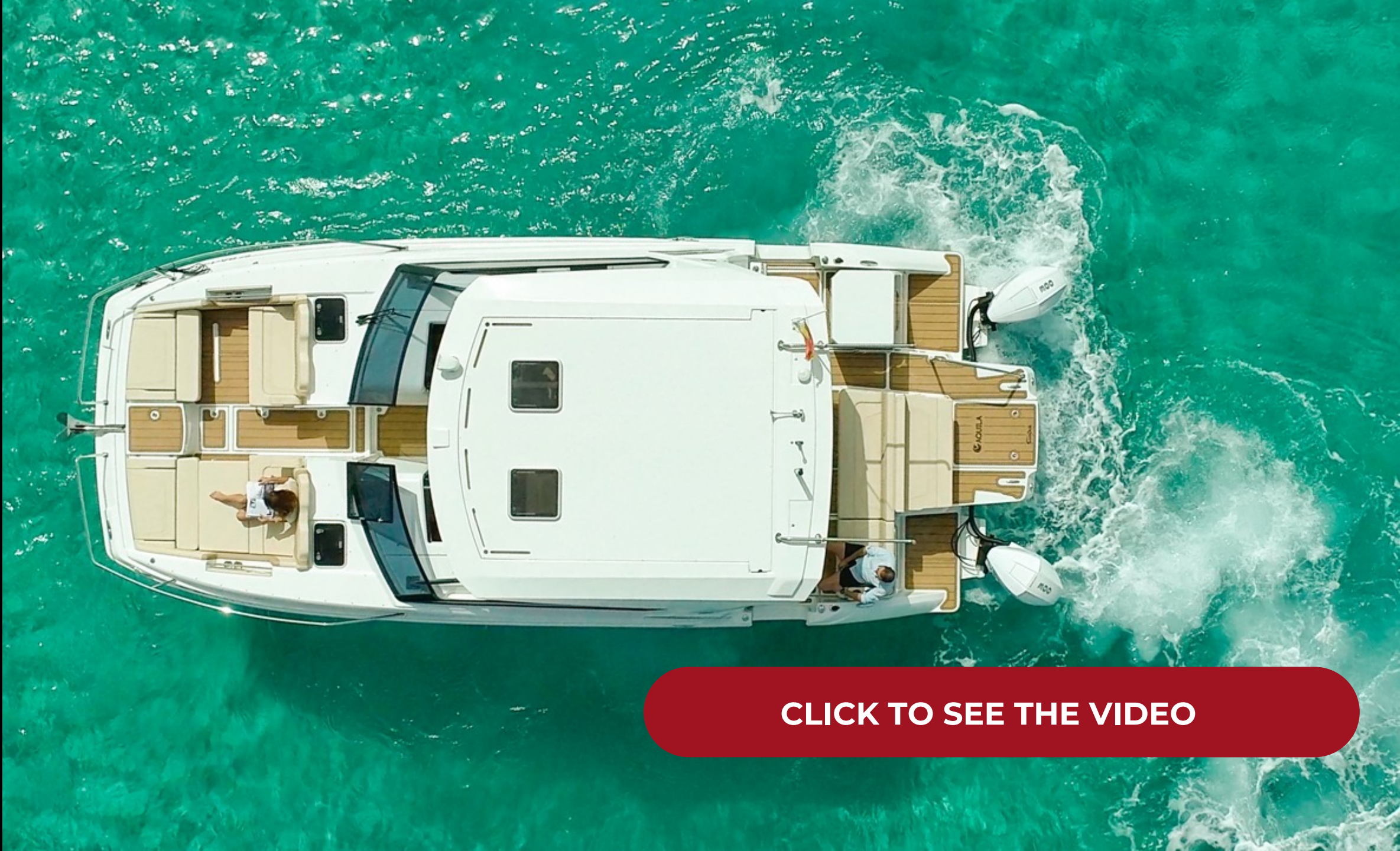




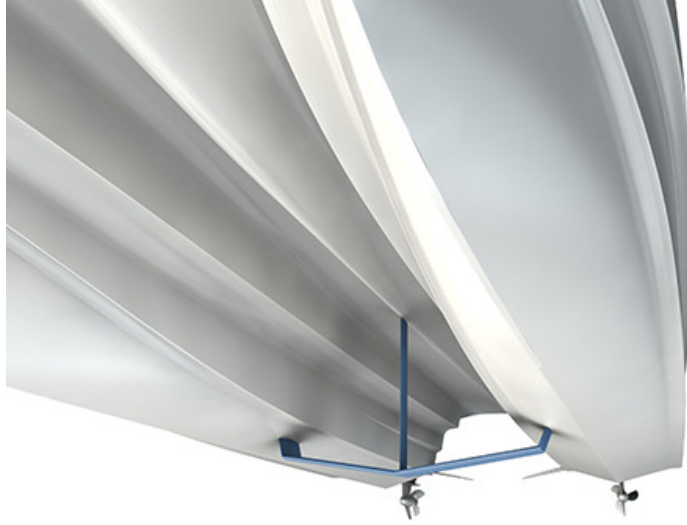
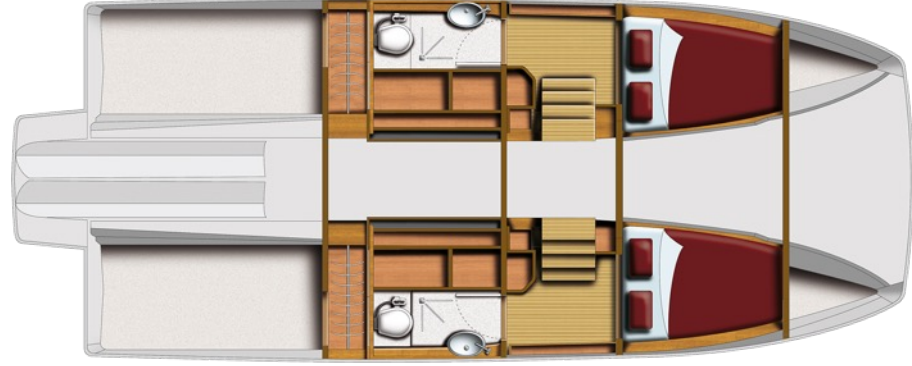
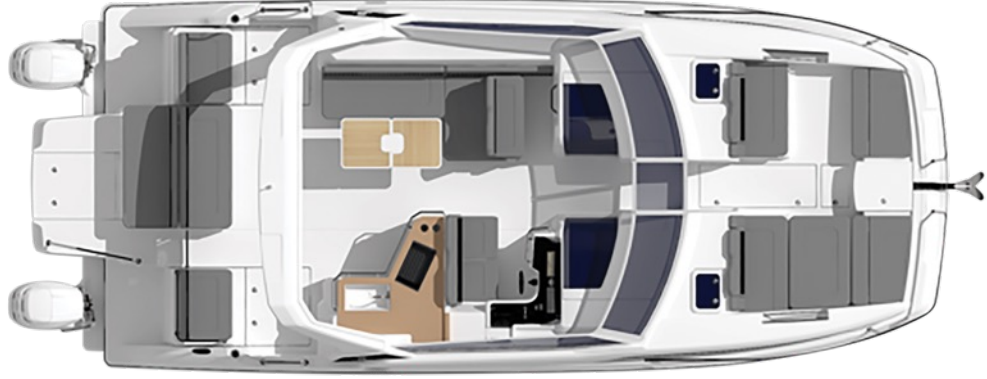








[CLICK TO SEE THE VIDEO](#)



Equipped with **Hydro Glide Foil System™** 35% fuel reduction.

[Lear more](#)



Image for reference only



estupenda
náutica

marketing@estupendanautica.com
estupendanautica.com